



## Oil cleaning: A simple solution for an invisible problem

A Simple, environmentally friendly solution for increased uptime and process availability. Investing in oil cleaning gives your company a better economy.

### EF2145DT

#### Offline oil cleaner

#### Removes all types of contamination:

- Soft and hard particles down to  $\geq 0,1 \mu\text{m}$
- Bacteria
- Water (free and emulsified)
- Oxidation products (sludge and resin).

#### Benefits:

- Cost effective maintenance
- No oil changes = Environmentally friendly
- Change filters instead of changing oil
- Increased machine lifetime
- Less downtime
- No oxidation in oil

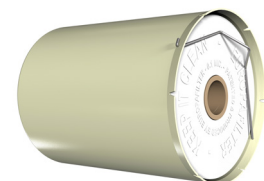


#### Filter insert EF500HY

Dirt capacity: ISO 12103-1 FTD: 1755 g  $\geq 0,1$  micron

Water absorption, restricted and unrestricted:  $\geq 3000\text{ml}$

Material insert: Cellulose, Polypropylene Homopolymer

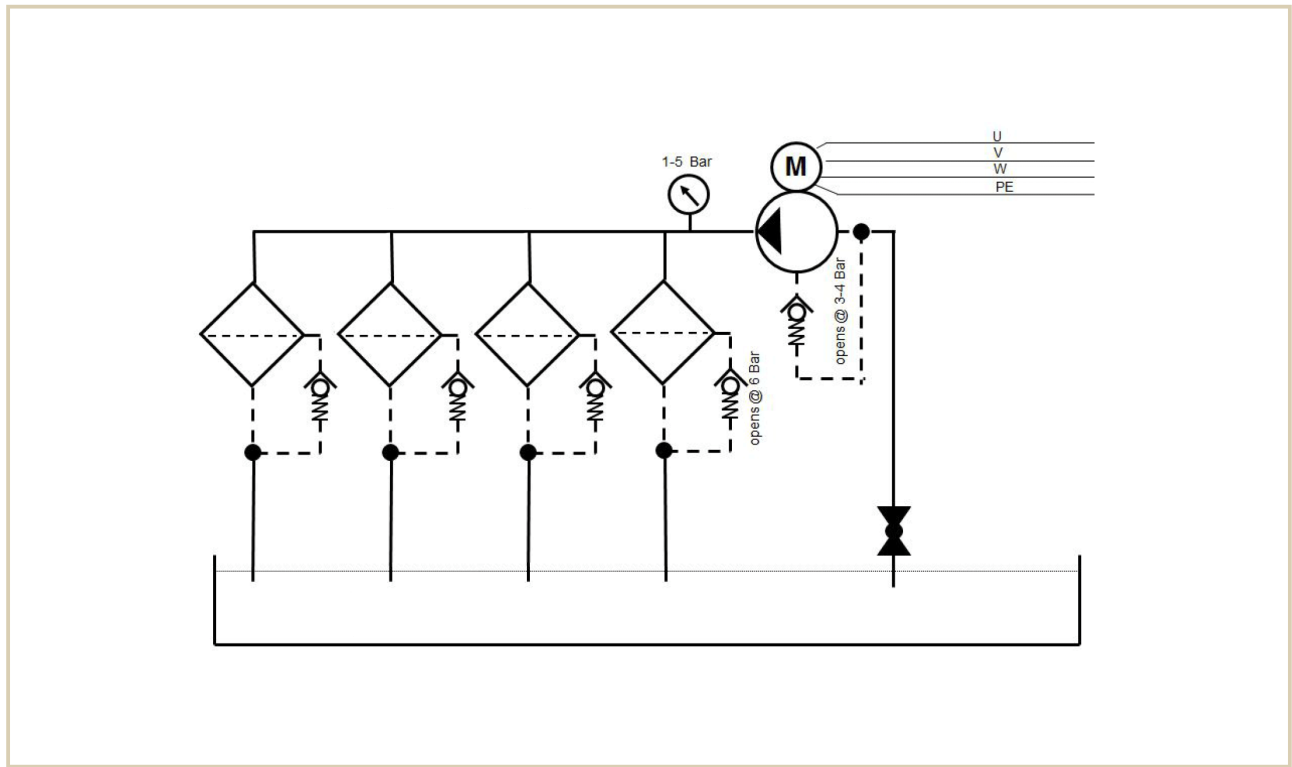


**TECHNICAL SPECIFICATION**

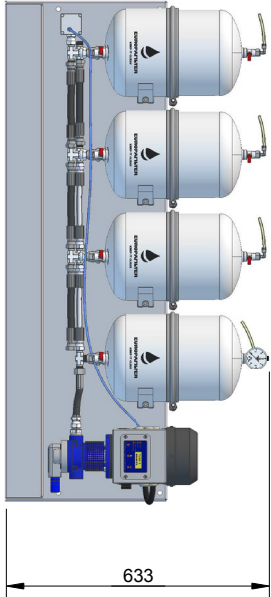
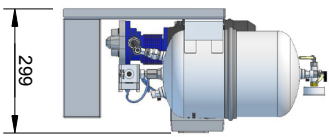
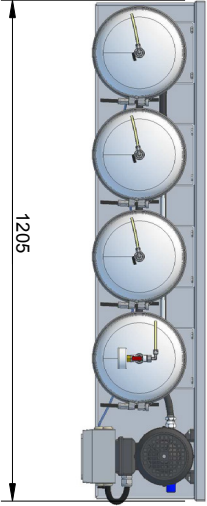
Europafilter	EF2145DT							
Dry weight:	54 kg							
Operating weight:	85 kg							
Depth:	299 mm							
Width:	1205 mm							
Height:	633 mm (Service height filter replacement + 250 mm)							
Dirt capacity: (particles/water)	Particles ISO 12103-1 FTD: 1755 g $\geq$ 0,1 micron Water absorption, restricted and unrestricted: $\geq$ 3000 ml (Depending on oiltype)							
Oil temp:	Max. 80 °C (On higher temperatures contact Europafilter)							
Particle removal:	$\geq$ 0,1 micron							
Working pressure:	0.8–5 bar							
Pressure:	Max. 6 bar, safety valve opens at 6 bar							
Power consumption:	0.12 kW							
Power supply:	Standard 1x230 V. Optional 3x220 V / 3x400 V+N. Others on request							
Hose connection IN:	$\varnothing$ 3/4" BSP							
Hose connection OUT:	$\varnothing$ 3/8" BSP							
Installation (see drawing):	Connect as an offline unit. «IN» = hose to tank and «UT» = hose to tank							
Flow, min.–max.:	6–240 l/h. Varies depending on oil viscosity and pressure							
Approx flow at 3 bar:	32 cSt	46 cSt	68 cSt	100 cSt	150 cSt	220 cSt	320 cSt	460 cSt
	8 l/min	6 l/min	4 l/min	3,2 l/min	2,4 l/min	1,6l/min	0,8 l/min	0,4 l/min
Oil volume *, max. rec.:	24000 l	18000 l	12000 l	10400 l	8800 l	8000 l	3600 l	1800 l

\* For other oilvolumes: Contact your Europafilter dealer.

**TECHNICAL DRAWING** Offline installation



TECHNICAL SPECIFICATION

1	2	3	4	5	6																																
																																					
																																					
																																					
		<table border="1" style="width: 100%; border-collapse: collapse;"> <tr> <td style="width: 25%;">Item ref</td> <td style="width: 25%;">Quantity</td> <td colspan="2">Title/Name, designation, material, dimension etc</td> </tr> <tr> <td>Drawn by Joachim Raiml</td> <td></td> <td>Checked by</td> <td>Approved by - date</td> </tr> <tr> <td colspan="2" style="text-align: center; font-size: 2em; font-weight: bold;">2145DT</td> <td>File name</td> <td>Date</td> </tr> <tr> <td colspan="2"></td> <td>14.07.01</td> <td>2014-07-01</td> </tr> <tr> <td colspan="2"></td> <td>Article No./Reference</td> <td>Scale</td> </tr> <tr> <td colspan="2"></td> <td></td> <td>1/14</td> </tr> <tr> <td colspan="2"></td> <td>Edition</td> <td>Sheet</td> </tr> <tr> <td colspan="2"></td> <td></td> <td></td> </tr> </table>		Item ref	Quantity	Title/Name, designation, material, dimension etc		Drawn by Joachim Raiml		Checked by	Approved by - date	2145DT		File name	Date			14.07.01	2014-07-01			Article No./Reference	Scale				1/14			Edition	Sheet						
Item ref	Quantity	Title/Name, designation, material, dimension etc																																			
Drawn by Joachim Raiml		Checked by	Approved by - date																																		
2145DT		File name	Date																																		
		14.07.01	2014-07-01																																		
		Article No./Reference	Scale																																		
			1/14																																		
		Edition	Sheet																																		
1	2	3	4	5	6																																