



## Oil cleaning: A simple solution for an invisible problem

A Simple, environmentally friendly solution for increased uptime and process availability. Investing in oil cleaning gives your company a better economy.

### EF2145Dsbs Offline oil cleaner

#### Removes all types of contamination:

- Soft and hard particles down to  $\geq 0,1 \mu\text{m}$
- Bacteria
- Water (free and emulsified)
- Oxidation products (sludge and resin).

#### Benefits:

- Cost effective maintenance
- No oil changes = Environmentally friendly
- Change filters instead of changing oil
- Increased machine lifetime
- Less downtime
- No oxidation in oil

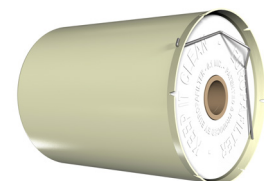


#### Filter insert EF500HY

Dirt capacity: ISO 12103-1 FTD: 1755 g  $\geq 0,1$  micron

Water absorption, restricted and unrestricted:  $\geq 3000\text{ml}$

Material insert: Cellulose, Polypropylene Homopolymer

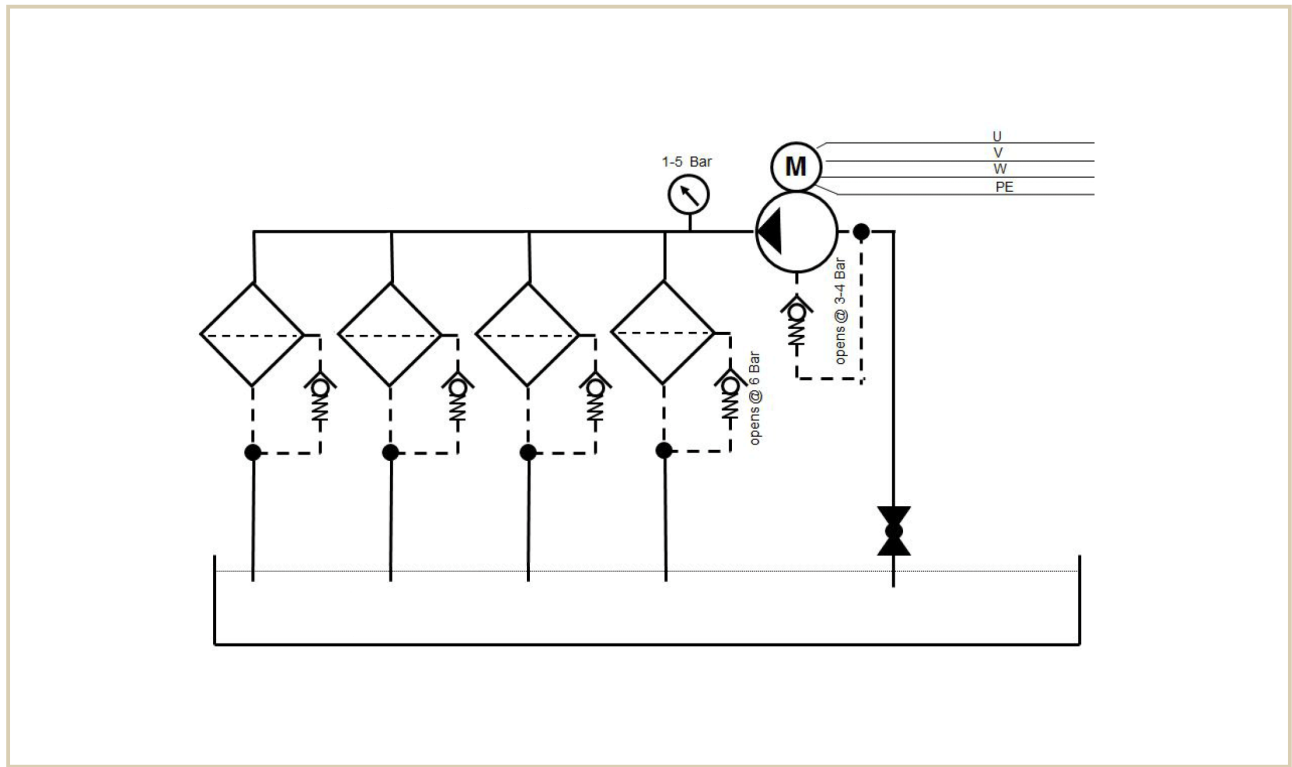


**TECHNICAL SPECIFICATION**

Europafilter	EF2145Dsbs							
Dry weight:	39 kg							
Operating weight:	72,2 kg							
Depth:	314 mm							
Width:	1192 mm							
Height:	696 mm (Service height filter replacement + 250 mm)							
Dirt capacity: (particles/water)	Particles ISO 12103-1 FTD: 1755 g $\geq$ 0,1 micron Water absorption, restricted and unrestricted: $\geq$ 3000 ml (Depending on oiltype)							
Oil temp:	Max. 80 °C (On higher temperatures contact Europafilter)							
Particle removal:	$\geq$ 0,1 micron							
Working pressure:	0.8–5 bar							
Pressure:	Max. 6 bar, safety valve opens at 6 bar							
Power consumption:	0.12 kW							
Power supply:	Standard 1x230 V. Optional 3x220 V / 3x400 V+N. Others on request							
Hose connection IN:	$\varnothing$ 3/4" BSP							
Hose connection OUT:	$\varnothing$ 3/8" BSP							
Installation (see drawing):	Connect as an offline unit. «IN» = hose to tank and «UT» = hose to tank							
Flow, min.–max.:	6–240 l/h. Varies depending on oil viscosity and pressure							
Approx flow at 3 bar:	32 cSt	46 cSt	68 cSt	100 cSt	150 cSt	220 cSt	320 cSt	460 cSt
	8 l/min	6 l/min	4 l/min	3,2 l/min	2,4 l/min	1,6l/min	0,8 l/min	0,4 l/min
Oil volume *, max. rec.:	24000 l	18000 l	12000 l	10400 l	8800 l	8000 l	3600 l	1800 l

\* For other oilvolumes: Contact your Europafilter dealer.

**TECHNICAL DRAWING** Offline installation



TECHNICAL SPECIFICATION

	1	2	3		4	5	6	
	A	B	C	D	A	B	C	
	<p>696 (Servicehöjd vid filterbyte + 250 mm)</p>		<p>1192</p>		<p>314</p>			
RevNo	Revision note		Date	Signature	Checked			
			14-08-18		Edition	Sheet		
Itemref		Quantity	Title/Name, designation, material, dimension etc				Article No./Reference	Scale
Drawn by		Checked by	Approved by - date		File name		Date	2014-08-18
Joacim Rainil								
<b>EF2145Dsbs</b>								